

Welcome to The Aldenham Estate

The Aldenham Estate warmly welcomes you to this the first in-person public consultation event to explain the Home Farm Hub proposals.

A planning application has recently been submitted and the plans are here for you to consider.

Please wander around the exhibition to look at the presentation and let us know what you think.

Representatives from the Aldenham Estate are on hand to answer any questions you may have and forms are available for you to feedback.

Thank you

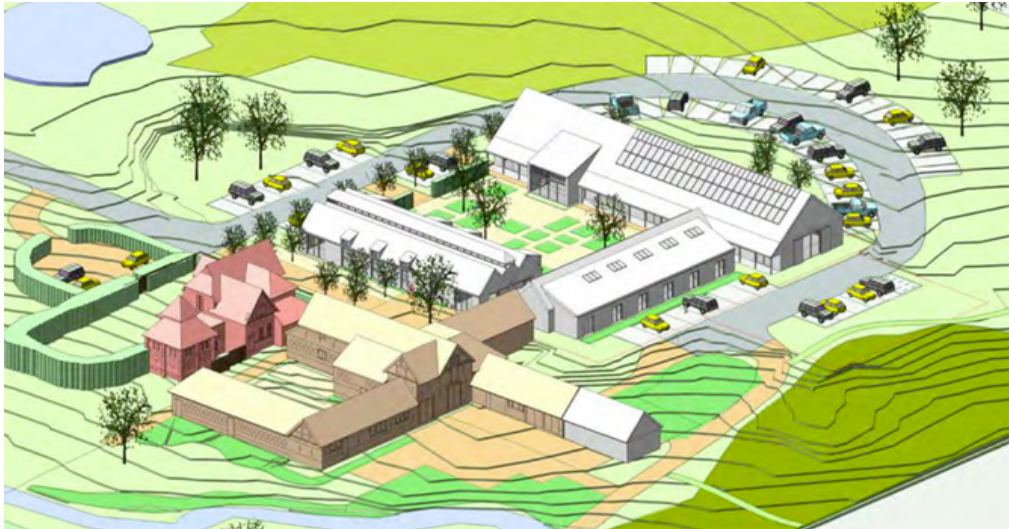
Home Farm Hub

With so many people changing the pattern of their working life, the Estate is introducing a new concept for Hertsmere. The Home Farm Hub aims to offer the best of both worlds by providing high specification offices in a rural environment close to where Hertsmere residents live.

Set within 150 acres of historic parkland hidden away on London's doorstep, we hope that the Hub will become a go-to destination for the local business community; offering a new lifestyle for those who want an alternative to commuting to London or working from home.



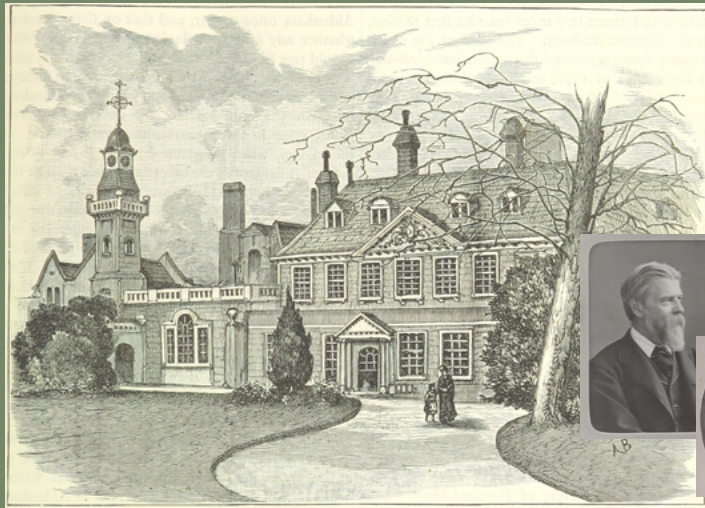
Using a mixture of historic Victorian barns and some new contemporary designed rural buildings, the scheme will offer comfortable, well-connected workspace and meeting rooms in a vibrant, collaborative atmosphere, with flexible memberships and longer-term tenancies available.



Those working here will also benefit from the café/deli and multi-functional space as well as the opportunity for walks or runs around the lake and gardens, yoga classes in the exercise studio and tending to the kitchen garden during a work break.

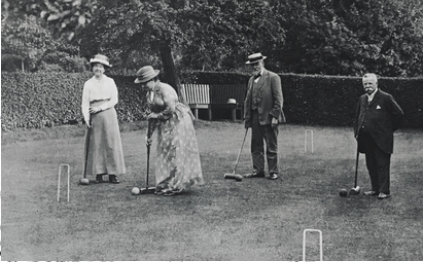
The Aldenham Estate

Home Farm is being promoted by the Gibbs family, the owners of the Aldenham Estate. The site forms part of the Grade II registered park that surrounds Aldenham House, which is now part of Haberdashers Aske's School. At the turn of the 19th century Henry Hucks Gibbs, together with his son Vicary, created an almost forgotten treasure - the famous park and gardens at Aldenham House.



The Aldenham Estate became renowned for its botanical and rare tree collections, as well as for its water gardens, with its sequence of small lakes and characterful bridges most of these remain - a short walk from here!





Lister Institute

Aldenham House

ALDENHAM PARK

Home Farm

WELLING STREET

Wapping Lane

Aldenham Lodge

Tyler Way

Lane



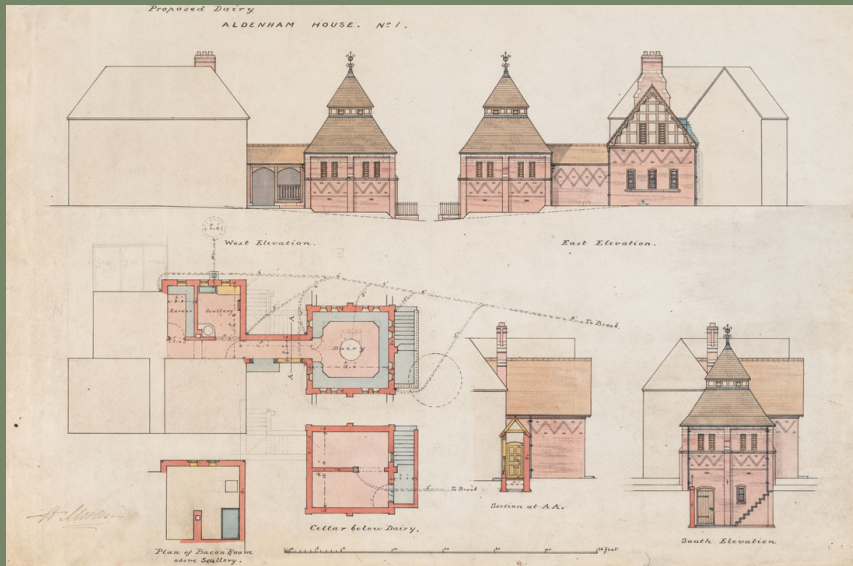
The current generation of the Gibbs family is committed to reviving the Aldenham Estate's history of sustainable stewardship responsibilities.

This project represents the family's drive to upgrade and revive its assets so that they are more responsive to the needs of local people and modern lifestyles, whilst promoting the importance of nature for people's mental and physical health.



The story of Home Farm

The Home Farm at Aldenham was conceived as a “model farm.” The few buildings that remain are the decorative farmhouse and attached dairy, now Grade II listed. They were designed by William Butterfield, a revered gothic revival architect. The beautiful grounds are also famous as the location for several feature films and TV series such as “The Avengers.”



Like so many farms in this area, Home Farm suffered in the post-war years from attempts to adapt it to intensive farming. Now used for car sales, coach parking and a range of storage and workshops, these buildings are now largely obsolete and their dilapidated appearance impinges on the setting of the listed farmhouse. They are also detracting from the successful glamping business in the neighbouring meadow which now brings in 3,000 visitors every year.



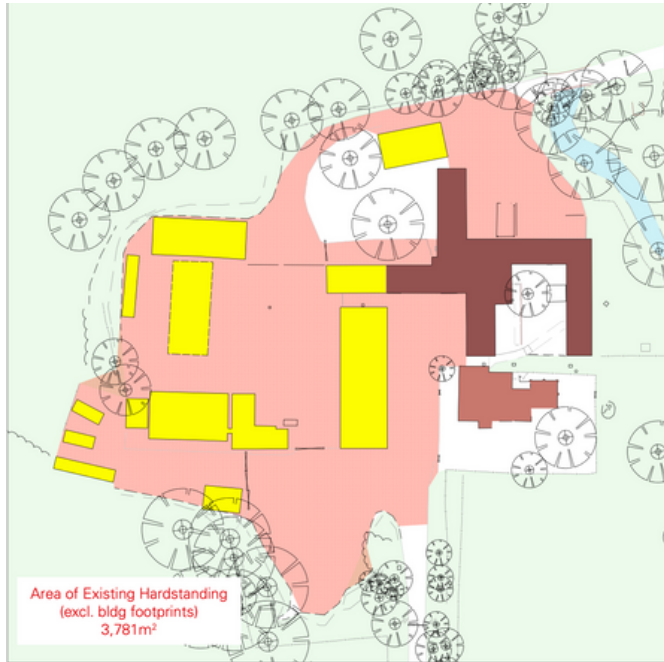
Home Farm Hub plans

These plans summarise our proposals and show how the scheme will sit within the imaginative landscape designed by the local award-winning designer Tom Stuart-Smith.

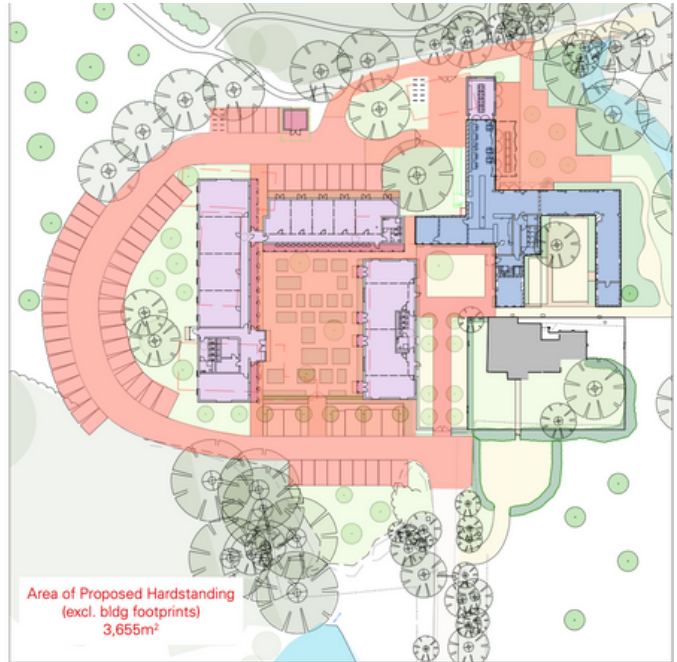
It demonstrates how this new proposal will fit into the existing footprint and not encroach into the green belt.



Home Farm Hub plans



Existing

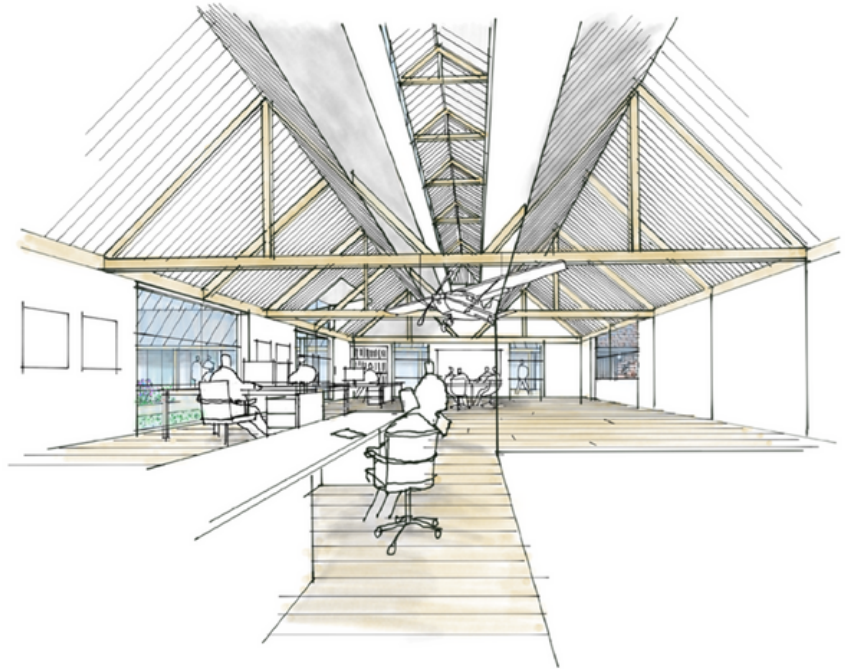


Proposed

High-spec workspaces

The proposal aims to integrate the highest quality, well-connected workspace into the surviving historic farm buildings.

In terms of sustainability, we are targeting the criteria of a BREEAM “excellent” rating. A range of sustainable technologies and practices are proposed throughout design and construction.



Multi-functional space



It will be available for use by all those working here as well as one of the spaces in which a series of intimate networking events are hosted. In addition, there will be opportunities for its hire by the local community.

There are plans for a flexible space that can be used for a wide range of uses ranging from meeting space, dining venue, to yoga studio.



Café Deli



Roth Bar & Grill, Bruton, Somerset - Benjamin & Beauchamp Architects

We will have a dedicated chef serving high-quality nutritious meals using local produce including fruit and vegetables grown in our kitchen garden.

The café/ deli is laid out in a series of separate spaces that will provide a conducive atmosphere for informal meetings as well as a welcoming space for visitors.

There will also be an internal ordering system for office members to order takeaway meals to enjoy in the private landscaped areas surrounding each office.



Roth Bar & Grill, Bruton, Somerset - Benjamin & Beauchamp Architects

Landscaping

The landscape scheme reflects its status as a 'registered park' part of the former park and gardens of Aldenham House (now Haberdashers Askes' Schools) which became famous as a botanical attraction.

The essence of the proposal is to create a blend of soft and hard landscaped courtyards around the existing and new buildings. It is designed to help bring the countryside into the workplace and significantly enhance the biodiversity of the local area.



Each of these spaces will have a different purpose based around gardening, health and wellbeing. There will be places for outdoor meetings or quiet contemplation.

We propose to have a separate garden for those that work here, to enable them to take short breaks from work assisting our full-time gardener in growing flowers or vegetables. Recent research has shown that short periods of gardening and interaction with nature within the working day can substantially improve productivity and Home Farm will seek to promote this throughout its design.



What next?

Over the next few weeks, Hertsmere will be asking for the views of the public and statutory bodies prior to the planning application being presented to the Council's Committee. Before then we would like to hear your views.

Please complete a form to share your thoughts, either here in person or at homefarmhub.co.uk/planning-feedback. Alternatively, please email hello@homefarmhub.co.uk.

Please visit homefarmhub.co.uk for regular updates and subscribe to our newsletter to stay informed.

If you are interested in taking space in Home Farm Hub let one of the representatives of the Estate know during your visit or contact us on hello@homefarmhub.co.uk.

Thank you very much for attending and showing interest in the Home Farm Hub.

The Aldenham Estate Team

homefarmhub.co.uk